

Fire-rated element for combustible pipe penetrations

DESCRIPTION

AF COLLAR C is an innovative fire-rated C-shaped collar designed to grant EI 120 / EI 180 (according to EN 1366-3) to walls and floors passed through by combustible pipes that present a curved shape.

AF COLLAR C consists of a stainless steel case and intumescent stripes (AF FIRE-FILL 50/70/100).

In case of fire, due to the action of heat, the combustible pipe suffers a deformation and melts gradually while the intumescent part of the **AF COLLAR C** expands and blocks the passage of smoke and flames.

The particular "C" shape avoids the need to manufacture ad-hoc structures made of calcium silicate or gypsum slabs.

CHARACTERISTICS

Aspect :	stainless steel "C" shaped element
Color:	silver
Available sizes:	110, 160, 200, 250, 400 and 500 mm
Free expansion:	>20:1
Activation temperature:	180°C

FIELD OF APPLICATION

AF COLLAR C has been designed to fire protect the passages of combustible pipes presenting a curved shape (PVC, PE, PP) in walls and floors.

APPLICATION METHOD

1. Place the **AF COLLAR C** around the pipe on the fire exposed side
2. Secure **AF COLLAR C** with metal anchors (8x60 mm) if applied on floors and concrete walls. Secure it with self-tapping metal screws if applied on plaster-board walls

WARNING

Product for professional use.
Always use gloves when handling and installing the material.

PACKAGING AND STORAGE

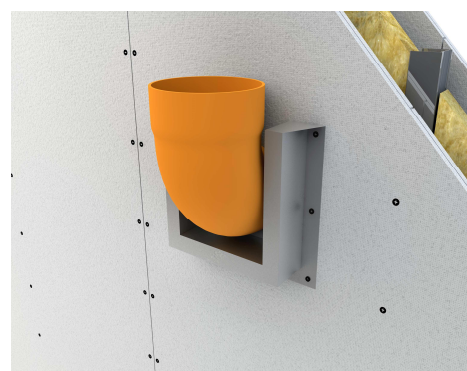
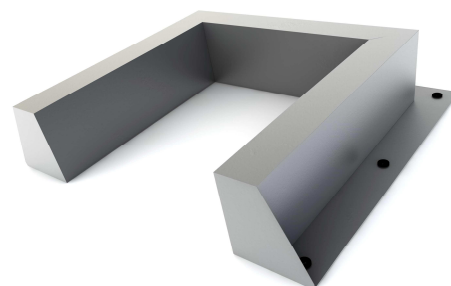
Cardboard boxes.
As long as the product is kept in a dry environment, there is no time limit for its storage.

SPECIFICATIONS

Supply and installation of the fire-rated collars **AF COLLAR C** consisting of a stainless steel "C" shape elements containing the intumescent material Firefill 50/100. **AF COLLAR C** have been designed to grant EI 120 / EI 180 to walls and floors passed through by combustible pipes that present a curved shape.

CERTIFICATIONS

Class EI 180	(EN 1366-3)	Concrete floor
Class EI 180	(EN 1366-3)	Aerated concrete wall
Class EI 120	(EN 1366-3)	Plasterboard wall
ETA 16/0772		



Tested applications on walls and floors

Type	Internal diameter (mm)	External size (mm)	Height (mm)
AF COLLAR C 110	Up to 110	160x160	50
AF COLLAR C 160	From 110 to 160	230x230	70
AF COLLAR C 200	From 160 to 200	300x300	100
AF COLLAR C 250	From 200 to 250	350x350	150
AF COLLAR C 400	From 250 to 400	450x450	150
AF COLLAR C 500*	From 400 to 500	500x500	150

*Certified EI60 only on floors